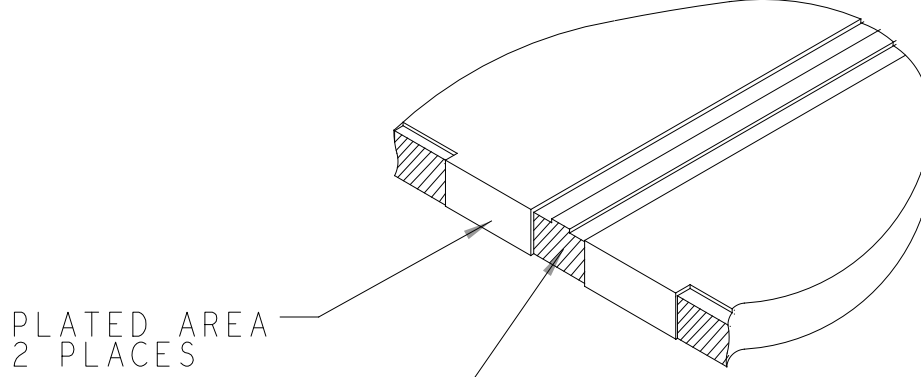


REVISIONS			
REV	DESCRIPTION	DATE	APPROVED
A	INITIAL RELEASE	14NOV22	DAVE M.
B	REVISED PER ECR-121998	31JUL24	DAVE M.
C	REVISED PER ECR-130670	29MAR26	N.BELAVAT



EDGE PLATING NOT ALLOWED IN CENTER CONDUCTOR AND GAP AREA. IT MUST BE CLEARED TOP TO BOTTOM. EDGE PLATING SHOULD BE IN LINE WITH TOP ETCH. BOARD EDGE IN THE PLATED AND NON PLATED AREA MUST BE FLAT/FLUSH. NO BUMPS.

DETAIL A

DETAIL B


HOLE TOLERANCE

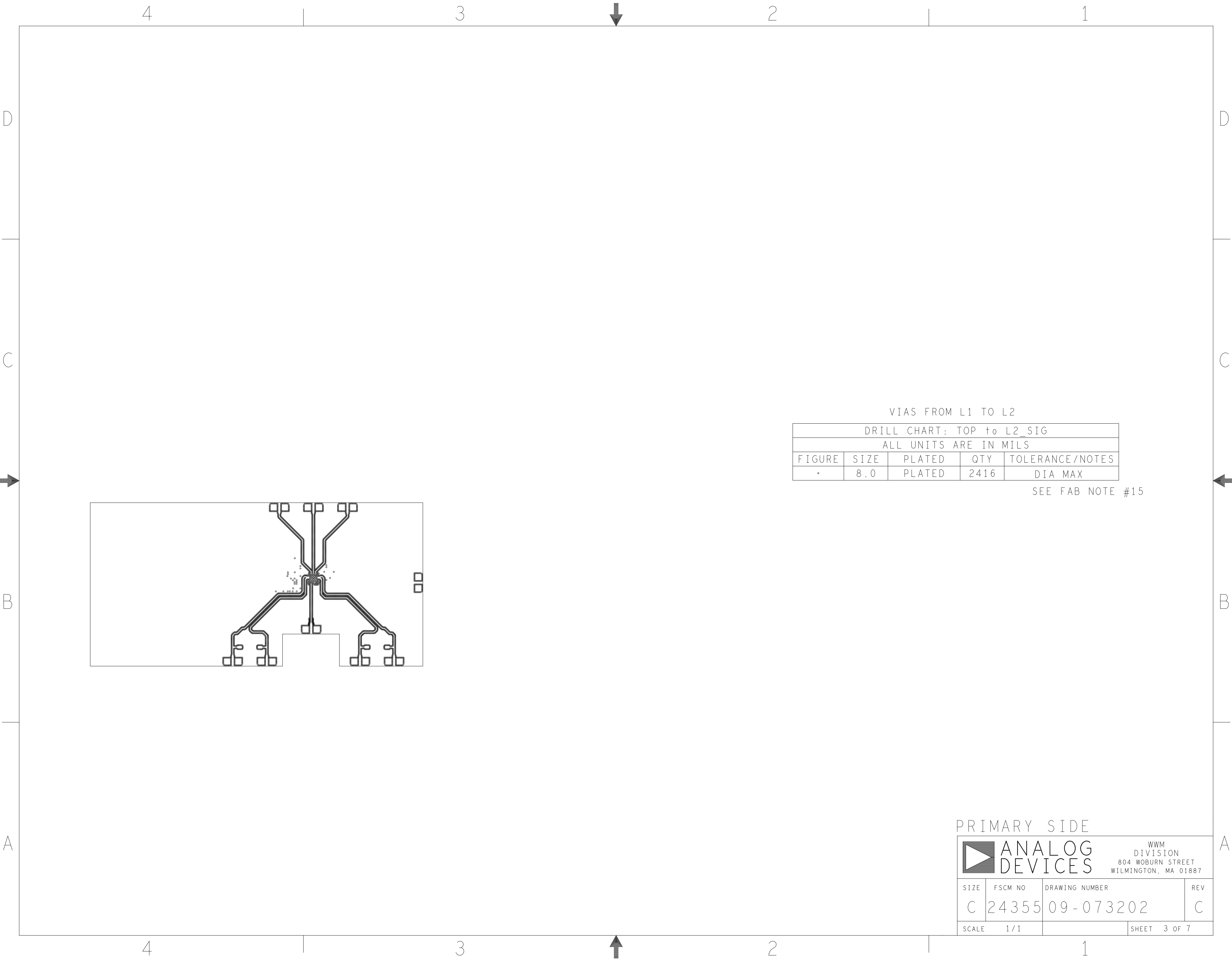
UNLESS SPECIFIED  
PLATED: +/-3MILS  
NON PLATED: +/-2MILS

DRILL CHART: TOP to BOTTOM				
ALL UNITS ARE IN MILS				
FIGURE	SIZE	PLATED	QTY	TOLERANCE/NOTES
+	8.0	PLATED	73	SEE NOTE 15
o	10.0	PLATED	81	SEE NOTE 15
•	12.0	PLATED	167	SEE NOTE 15
·	15.0	PLATED	591	
°	16.0	PLATED	16	
°	20.0	PLATED	60	
•	45.0	PLATED	72	
o	63.0	PLATED	9	
[B]	120.0	PLATED	4	
c	28.0	NON-PLATED	1	
d	43.0	NON-PLATED	1	
e	67.0	NON-PLATED	18	
f	125.0	NON-PLATED	4	
g	125.0	NON-PLATED	2	
h	67.0x24.0	PLATED	2	
h	83.0x24.0	PLATED	2	

SEE NOTE 18 AND DETAILS A AND B (14 PLACES)

PRIMARY SIDE

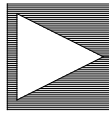
UNLESS OTHERWISE SPECIFIED DIMENSIONS ARE IN INCHES  TOLERANCES  DECIMALS      FRACTIONS      ANGLES .XX -.010      --1/32      -- 2 .XXX -.005      --1/64      -- 2 .XXXX -.0050      --1/128      -- 2			APPROVAL		DATE		<div>ANALOG DEVICES</div> <div>WWM DIVISION 804 WOBURN STREET WILMINGTON, MA 01887</div>				
			TEMPLATE ENGINEER								
			HARDWARE SERVICES								
			HARDWARE SYSTEMS								
MATERIAL			TEST ENGINEER				TITLE  FABRICATION  ADMV1355  CUSTOMER EVAL BRD				
			COMPONENT ENGINEER								
			TEST PROCESS								
			HARDWARE RELEASE								
FINISH			DESIGNER M. ALLEN		14NOV22		SIZE	FSCM NO	DRAWING NUMBER	REV	
			PTD ENGINEER C. LEVY		14NOV22						
			CHECKER								
DO NOT SCALE DWG							SCALE	1 / 1		SHEET	1 OF 7



VIAS FROM L1 TO L2				
DRILL CHART: TOP to L2_SIG				
ALL UNITS ARE IN MILS				
FIGURE	SIZE	PLATED	QTY	TOLERANCE/NOTES
.	8.0	PLATED	2416	DIA MAX

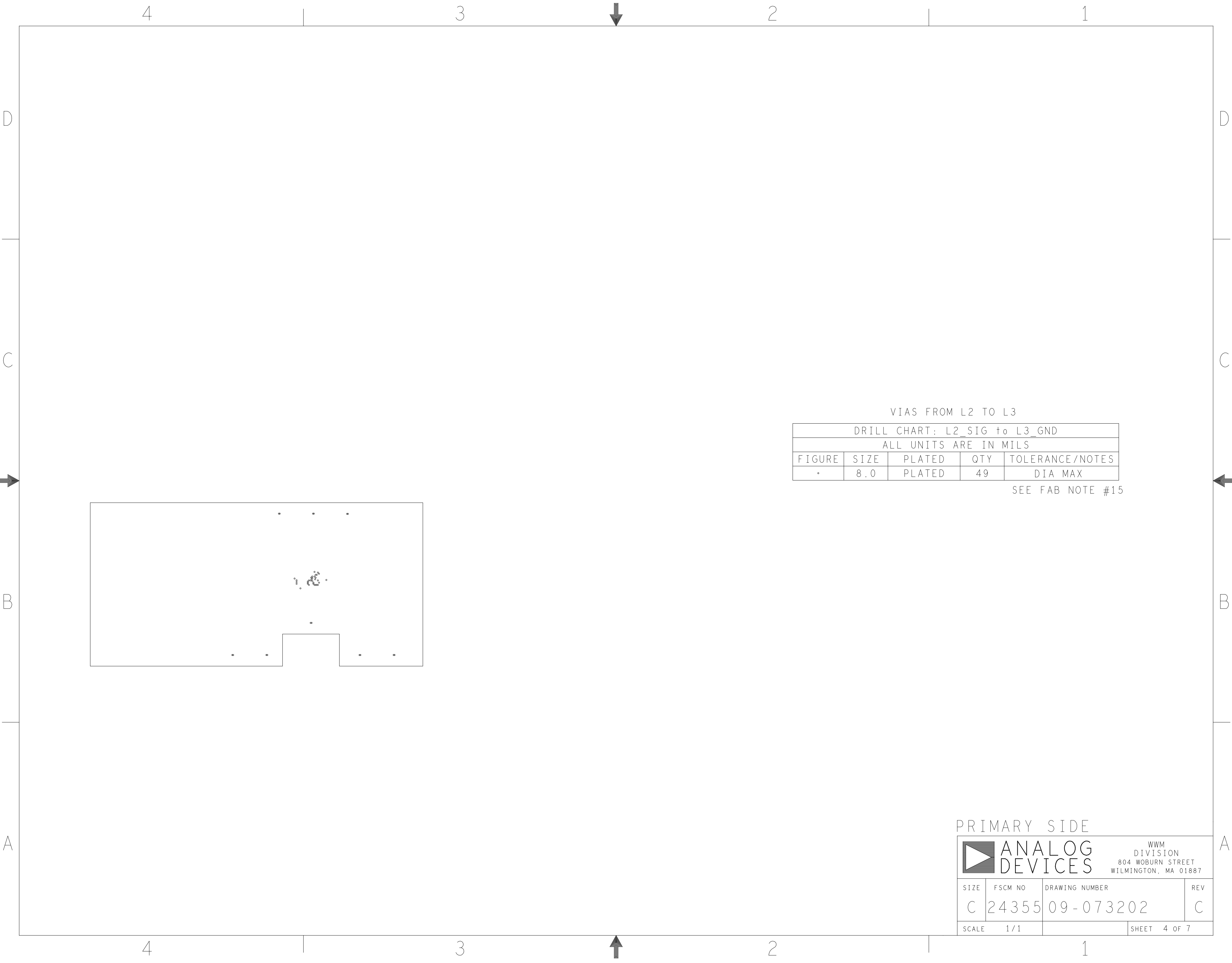
SEE FAB NOTE #15

PRIMARY SIDE

ANALOG  
DEVICES

WWM  
DIVISION  
804 WOBURN STREET  
WILMINGTON, MA 01887

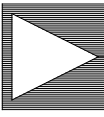
SIZE	FSCM NO	DRAWING NUMBER	REV
C	24355	09-073202	C
SCALE	1 / 1		SHEET 3 OF 7



VIAS FROM L2 TO L3				
DRILL CHART: L2_SIG to L3_GND				
ALL UNITS ARE IN MILS				
FIGURE	SIZE	PLATED	QTY	TOLERANCE/NOTES
.	8.0	PLATED	49	DIA MAX

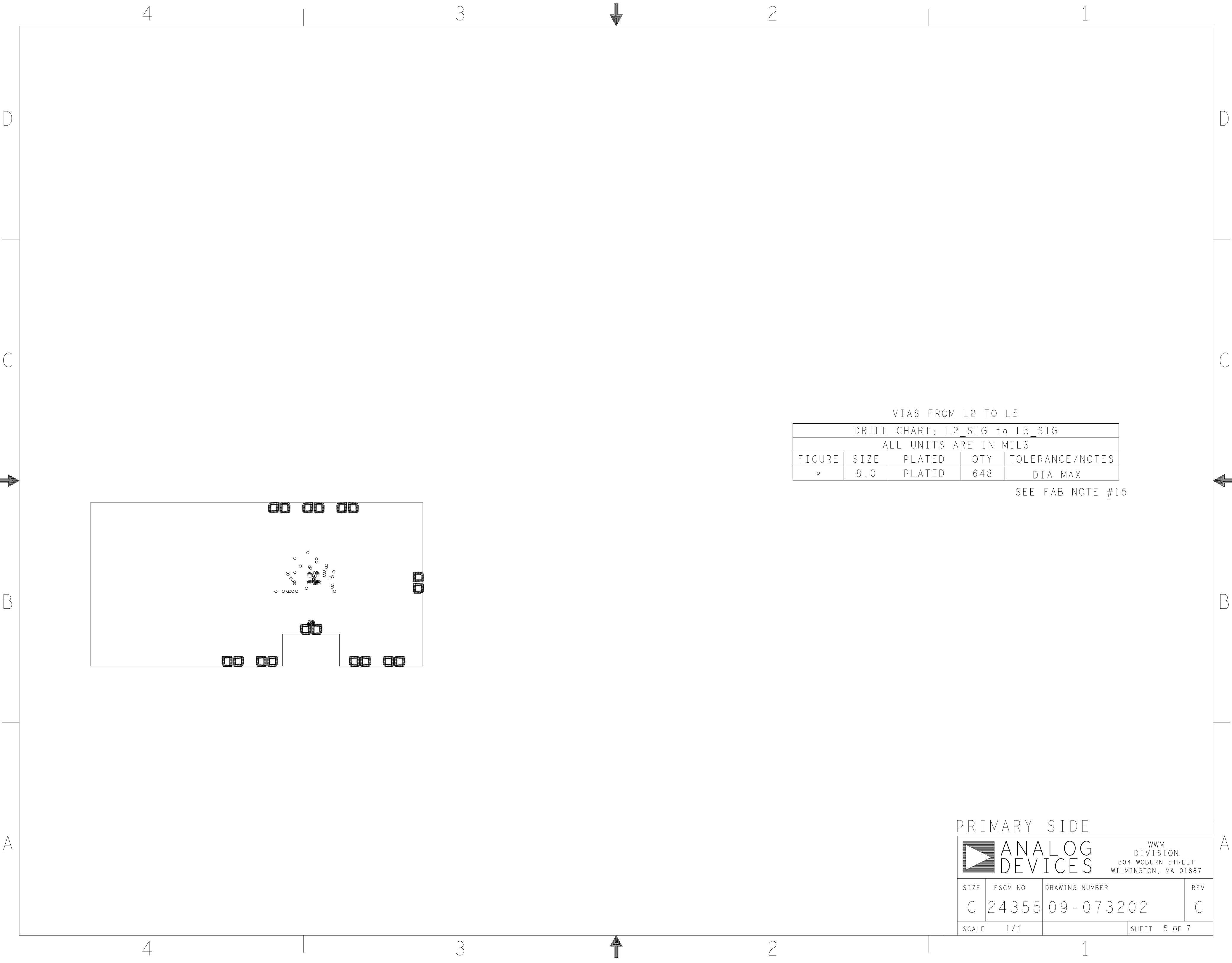
SEE FAB NOTE #15

PRIMARY SIDE

ANALOG  
DEVICES

WWM  
DIVISION  
804 WOBURN STREET  
WILMINGTON, MA 01887

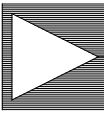
SIZE	FSCM NO	DRAWING NUMBER	REV
C	24355	09-073202	C
SCALE	1 / 1	SHEET 4 OF 7	



VIAS FROM L2 TO L5				
DRILL CHART: L2_SIG to L5_SIG				
ALL UNITS ARE IN MILS				
FIGURE	SIZE	PLATED	QTY	TOLERANCE/NOTES
◦	8.0	PLATED	648	DIA MAX

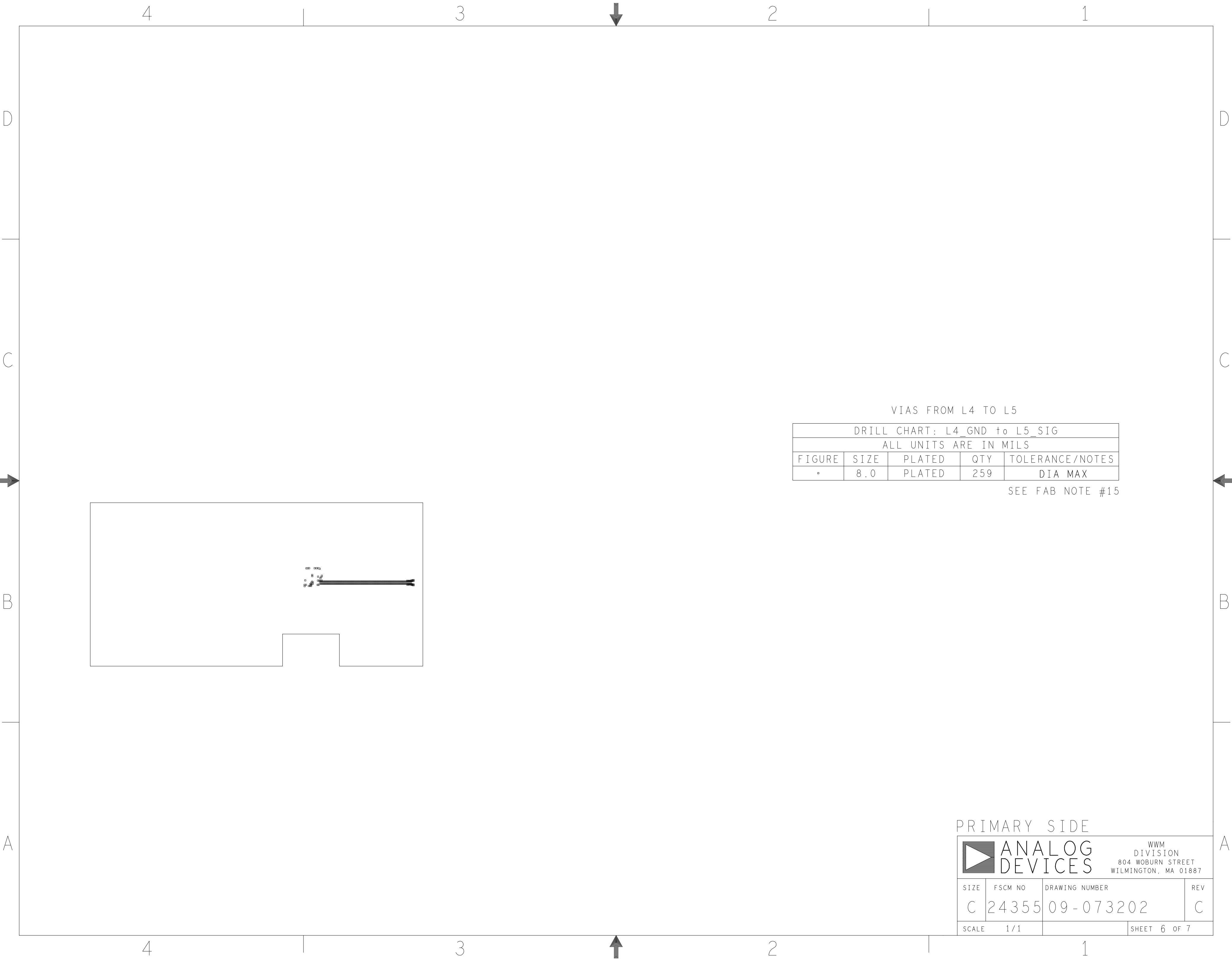
SEE FAB NOTE #15

PRIMARY SIDE

ANALOG  
DEVICES

WWM  
DIVISION  
804 WOBURN STREET  
WILMINGTON, MA 01887

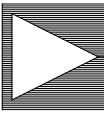
SIZE	FSCM NO	DRAWING NUMBER	REV
C	24355	09-073202	C
SCALE	1 / 1	SHEET 5 OF 7	



VIAS FROM L4 TO L5				
DRILL CHART: L4_GND to L5_SIG				
ALL UNITS ARE IN MILS				
FIGURE	SIZE	PLATED	QTY	TOLERANCE/NOTES
•	8.0	PLATED	259	DIA MAX

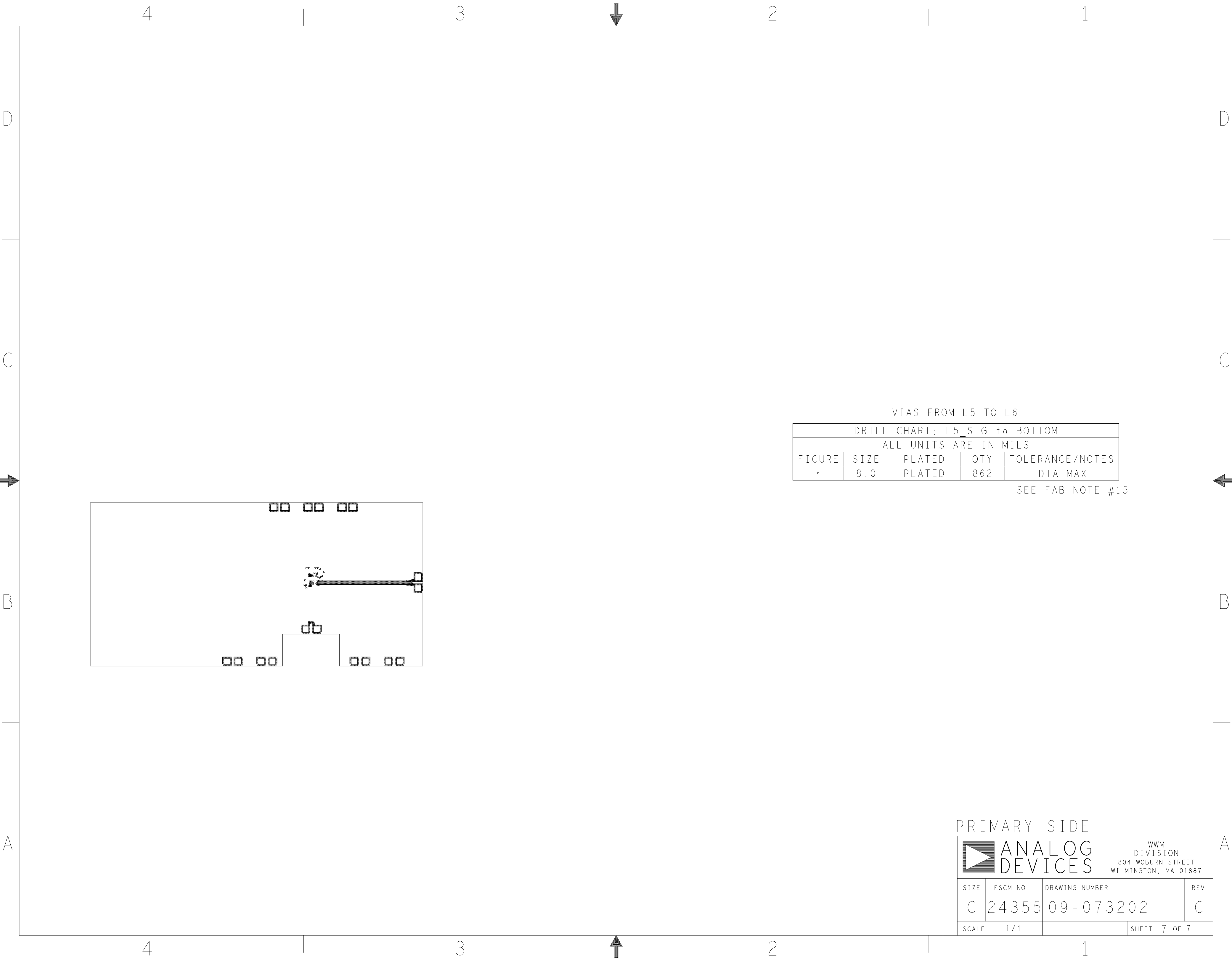
SEE FAB NOTE #15

PRIMARY SIDE

ANALOG  
DEVICES

WWM  
DIVISION  
804 WOBURN STREET  
WILMINGTON, MA 01887

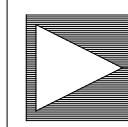
SIZE	FSCM NO	DRAWING NUMBER	REV
C	24355	09-073202	C
SCALE	1 / 1	SHEET 6 OF 7	



VIAS FROM L5 TO L6				
DRILL CHART: L5_SIG to BOTTOM				
ALL UNITS ARE IN MILS				
FIGURE	SIZE	PLATED	QTY	TOLERANCE/NOTES
•	8.0	PLATED	862	DIA MAX

SEE FAB NOTE #15

PRIMARY SIDE

	ANALOG DEVICES	WWM DIVISION 804 WOBURN STREET WILMINGTON, MA 01887	
SIZE	FSCM NO	DRAWING NUMBER	REV
C	24355	09-073202	C
SCALE	1 / 1	SHEET 7 OF 7	

4

3

2

1

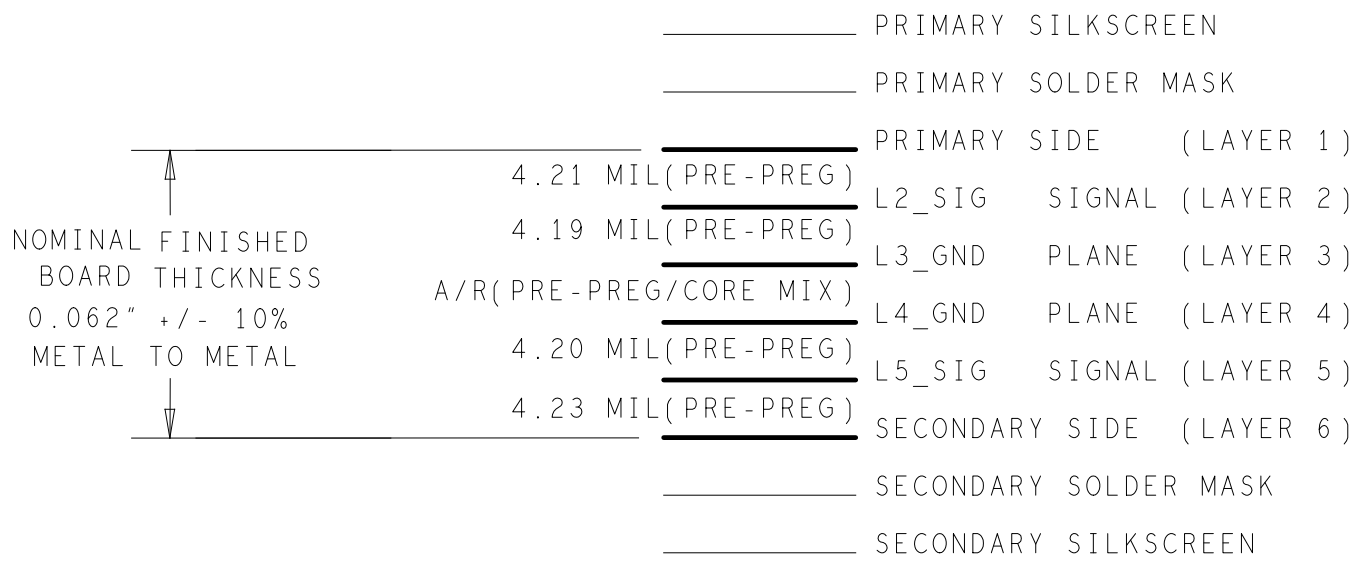
SPECIFICATIONS:

MATERIALS;	ALL LAMINATES AND BONDING MATERIALS SHOULD BE SELECTED FROM IPC-4101 OR IPC-4103, MINIMUM Tg>170degC, Td>300degC, U.L. RATING OF 94 V-0
MATERIAL FAMILY;	I-TERA MT40 FAMILY. PRE-PREG 1078(73) LAYERS 1-2, 2-3,4-5 AND 5-6 PRE-PREG 2116(62) LAYERS 3-4 CORE 3-3313 LAYERS 3-4
CLADDING;	EXTERNAL LAYERS 1/2 OZ. COPPER, OVERPLATE TO 1.6 MILS. INTERNAL SIGNAL LAYERS 1/3 OZ. COPPER, OVERPLATE TO .65 MILS. INTERNAL PLANE LAYERS 1 OZ. COPPER.  NOTE: IF THE LAYER STACKUP CONFLICTS WITH THE ABOVE CLADDING SPECIFICATIONS THEN THE LAYER STACKUP SHALL TAKE PRECEDENCE.
SOLDER MASK;	SHALL BE LIQUID PHOTOIMAGEABLE (LPI) APPLIED ON BOTH SIDES OVER BARE COPPER OR GOLD AND SHALL MEET IPC-SM-840 (LATEST REV.) CLASS 3. COLOR GREEN.
SILK SCREEN;	SHALL BE PERMANENT NON-CONDUCTIVE EPOXY INK, COLOR: WHITE SYNTHETIC INKJET PRINTING ALLOWED FOR DENSE BOARDS, COLOR: WHITE
SURFACE FINISH;	ENIG (ELECTROLESS NICKEL/IMMERSION GOLD) PER IPC-4552 LATEST REVISION
INTENTIONAL SHORTS;	IF SUPPLIED DATA INCLUDES A FILE "READ_ME.2", THEN INTENTIONAL NET SHORTS EXIST. CUSTOMER REVIEW AND APPROVAL IS REQUIRED IF SUPPLIED DATA REPORTS ANY CONDITION THAT DOES NOT MATCH "READ_ME.2" FILE PROVIDED.
TEST REQUIREMENTS;	100% NETLIST ELECTRICAL VERIFICATION USING CUSTOMER SUPPLIED IPC-D-356 NETLIST FOR OPENS AND SHORTS WHEN "GERBER DATA" IS PROVIDED. THIS VERIFICATION ALSO REQUIRED FOR "ODB++" DATA PER EMBEDDED NETLIST.

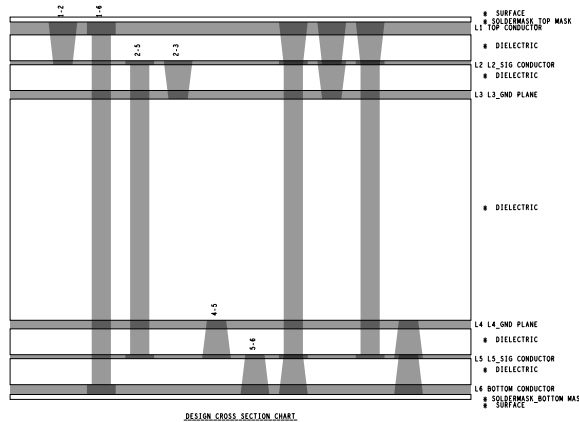
REQUIREMENTS:

- REFER TO IPC-6010 SERIES (LATEST REV.), CLASS 2 FOR FABRICATION UNLESS OTHERWISE SPECIFIED.
- ACCEPTABILITY PER ANALOG DEVICES, INC. SPECIFICATION TST00115, (LATEST REVISION.)
- MODIFICATIONS TO THE ARTWORK ARE NOT ALLOWED WITHOUT WRITTEN AUTHORIZATION.
- HOLE PATTERN TOLERANCES FOR UNDIMENSIONED HOLES SHALL BE A DIAMETER OF 0.005 INCHES FROM THEIR TRUE POSITION.
- PLATED HOLE WALL THICKNESS SHALL NOT BE LESS THAN 0.001 INCH MINIMUM AVERAGE, WITH NO READING LESS THAN .0008 BY CROSS SECTION.
- HOLE DIAMETERS APPLY AFTER PLATING.
- FINISHED CONDUCTOR WIDTHS SHALL NOT BE REDUCED FROM THE NOMINAL INDICATED ON THE MASTER PATTERN, BY MORE THAN THE CONDUCTOR THICKNESS.
- MINIMUM DESIGN LINE WIDTH IS .0045 INCH.
- MINIMUM DESIGN SPACING IS .0045 INCH.
- NON-FUNCTIONAL PAD REMOVAL FROM INNER SIGNAL LAYERS MAY BE PERFORMED AFTER CUSTOMER APPROVAL.
- IF PAD SIZES PROVIDED ARE NOT LARGE ENOUGH TO MAINTAIN ANNULAR RING REQUIREMENT, MFGR. MAY REQUEST APPROVAL TO TEAR DROP PADS TO MAINTAIN ANNULAR RING. (AT PAD TO TRACE INTERSECTION ONLY AND ELECTRICAL INTEGRITY MUST BE MAINTAINED.)
- THIEVING MAY BE ADDED TO COMPENSATE FOR LOW COPPER DENSITY AREAS ON THIS DESIGN ONLY AFTER REVIEW AND APPROVAL FROM THE CUSTOMER:  
  
A. THIEVING TO CARD EDGE, FIDUCIALS, NON-PLATED THROUGH HOLES, ALL OTHER FEATURES TO BE 0.200 INCH MINIMUM.  
B. THERE SHALL BE NO THIEVING IN ANY AREAS FREE OF SOLDER MASK OR INTERNAL COPPER PLANES.
- MFGR. TO LEGIBLY ETCH OR STAMP/SCREEN WITH PERMANENT NON-CONDUCTIVE INK ON SECONDARY SIDE IN A CLEAR AREA UNLESS OTHERWISE INDICATED;  
  
~~A. U.L. CODE-FLAMMABILITY RATING~~      D. MFGR LOGO  
B. DATE CODE (STAMP).                      E. SUCCESSFUL ELECTRICAL TEST.  
C. LOT NUMBER
- REPAIRS PER IPC-7711/21 (LATEST REV.) ARE ALLOWED.
- VIAS TO BE PLATED SHUT OR FILLED WITH NON-CONDUCTIVE EPOXY AND PLATED OVER. COPLANAR ON BOTH SIDES PRIOR TO FINAL PLATING.
- DETAIL B IS CRITICAL TO THE FUNCTIONALITY OF THE BOARD.
- ELECTRICAL TEST MUST BE DONE AFTER REMOVAL OF EDGE GOLD PER DETAIL B.
- CONNECTOR AREAS TO BE EDGE PLATED, PLATING MUST CONNECT ALL SIX LAYERS.
- THE COUPON BOARDS DO NOT NEEDANY SPECIAL SERIALIZATION OR LABELING OTHER THAN LOT CODE AND DATE CODE. THEY MUST BE SHIPPED WITH THE MAIN BOARD. ONE SET OF EACH COUPON PER LOT IS REQUIRED AS A MINIMUM.


6 LAYER STACKUP



CHARACTERISTIC IMPEDANCE = 50 OHMS +/- 10%  
ARTWORK LINE WIDTH FOR IMPEDANCE CONTROLLED LINES:  
LAYER 1 = 8 MILS  
LAYER 5 = 4.50 MILS  
LAYERS 3 AND 4 = 7.00 MILS



PRIMARY SIDE

	ANALOG DEVICES			WWM DIVISION 804 WOBURN STREET WILMINGTON, MA 01887	
SIZE	FSCM NO	DRAWING NUMBER			REV
C	24355	09-073202			C
SCALE	1/1			SHEET	2 OF 7